

SeniorNet (Pakuranga) Inc
12 Ben Lomond Crescent, Pakuranga Auckland 2010
Telephone 09 576 4500

APRIL 2025

Established in 1996 especially for Pakuranga, Howick and Botany residents



This issue:

- ◆ Next meeting
- ◆ March Help Days
- ◆ New members
- ◆ Bits and Bytes
- ◆ Dawn's Ravings
- ◆ Kate's Take
- ◆ Your Committee
- ◆ How to join a course

APRIL HELP DAYS

| | | |
|------|--------|------|
| TUES | 01 APR | 10AM |
| MON | 07 APR | 1 PM |
| WED | 16APR | 10AM |
| THUR | 24APR | 10AM |
| TUE | 29APR | 10AM |

if you ever get an
email about pork,
ham, salt, and
preservatives,
don't open it.
it's spam

Our next Meeting,

Friday 4th April

at 10.00am

St Andrews Church Centre
Corner Ridge Rd and Vincent St

The main entrance is in Vincent Street with
parking in the grounds and disabled parking
near the basement entrance.



Visitors welcome

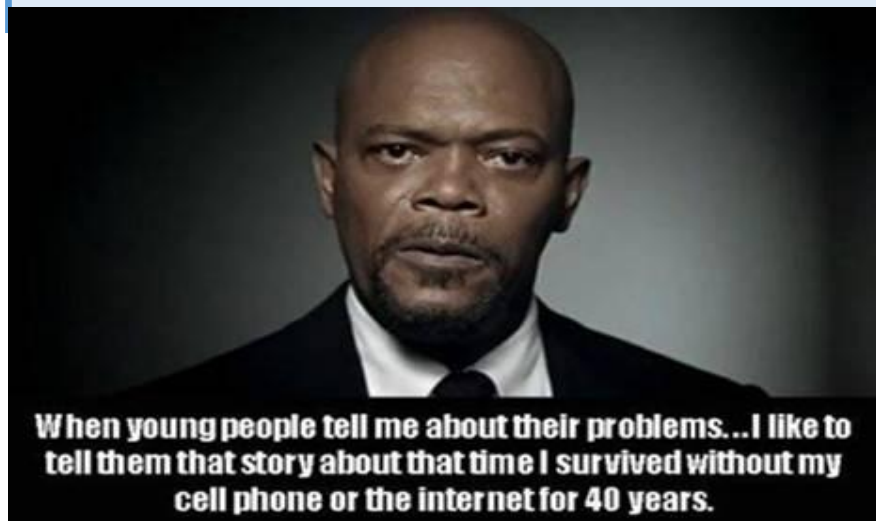
The meeting will open with another Special Meeting
followed by a talk from Kate.

The main speaker will be Keith Ingram from the Bucklands
Beach Residents and Ratepayers Association.



3 NEW MEMBERS

Jim Johnston
Ruth Money
Marian Roestenburg



As I commenced to write these notes a popup Copilot tried to influence me. It offered to write the draft. When I got as far as typing pop up as two words above and it flicked up a window saying it could do better. CoPilot is a Microsoft AI product and it's integrated now into almost everything you attempt from browser to Word to setting up new Apps such as Microsoft 365.

I have found Copilot a great help in solving tech issues. Rather than trawl through websites and reams of product notes I just describe what I think is going wrong and ask for a way ahead and its quite impressive.

My eye specialist and doctor both use a small PC on their desks with an unobtrusive microphone to record the consultation, make the relevant notes while leaving out the social talk so it's more that voice to text. At least it doesn't seem to be directly coupled to your medical history.

When I edited the special meeting notice for April the mail out App Mailchimp which we use, kept offering suggestions on how to improve the headings and content, mainly with an eye to improving the sales response which I guess is the main reason Mailchimp is used by business.

I heard a radio broadcast on Saturday where the interviewee noted that the big players in the game use your info to train their systems and it's in the small print we tick when accepting the terms of use. As she noted you are now tracked by mapping software, your online photos are scanned, if you use an email report to get a family history DNA report, they learn your DNA.

Maybe we will have to find a tutor willing to set up an AI workshop to try and get on level terms with this technology as our slogan goes "learning technology together"

Agenda for Special Meeting of Pakuranga SeniorNet Inc.

10am, 4 April 2025

Call meeting to order.

Confirm that the minimum Quorum of financial members 10 is present.

Item of business: Propose the nominations for election.

Ask for any additional nominations.

Move the election.

Propose the names as contacts for the Registrar of Incorporated Societies.

Move.

Close meeting.

Ramblings

Dawn Howarth

You won't believe it, but I have discovered bean plants can hear. Since my abuse of them last month, I have picked 3 large handfuls and there are still flowers. Now I'm back to watering daily, caring and smiling (occasionally).

We have had a friend staying with us for 2 weeks after she disembarked from a cruise ship which brought her from England. Imagine, 6 weeks on a cruise ship—stuff I dream of and she wanted to 'live my life' while she was here. Silly woman, I would've stayed on the ship. However she has booked to stay another 2 weeks in January. She's a tiger for punishment I think.

I hope all your dreams are coming true and that I see you at our exciting April meeting.

**When I was
young, I was
poor. But after
years of hard,
honest and
painstaking
work, I'm no
longer young.**

MOTHS AND BUTTERFLIES OF NEW ZEALAND TRUST



Jacqui Knight

A big thank you to Jacqui Knight from the "Moths and Butterflies of NZ Trust", for giving us a fascinating talk on the Lepidoptera of New Zealand. It is estimated that New Zealand is home to around 1800 different species, primarily moths, with only 17 butterfly species. Over 90% of these species are endemic, meaning they are found nowhere else in the world. Globally there may be over 20,000 different Lepidopteran species. Jackie shared the story of her son Christopher's interest in Monarch butterflies. After reading an article in the National Geographic about their remarkable migration from North America to Mexico he became curious about where our Monarchs overwintered in New Zealand. Thirty years before the advent of the internet Jacqui suggested he write to the

New Zealand Herald. Christopher quickly became an overnight sensation and before long he was being interviewed by Jim Henderson on Radio Pacific. From this the "Monarch Butterfly" Club was born.

Jacqui and Christopher began distributing swan plant seeds encouraging people to grow them in their gardens. The swan plant leaves are the preferred food of the Monarch butterfly caterpillars.



Eventually, 10-year-old Christopher moved on to other interests but Jacqui's enthusiasm for butterflies only increased. Today, she is a leading figure in the "Moths and Butterflies of NZ Trust". They have an excellent web site. This can be accessed at www.nzbutterflies.org.nz

Jacqui discussed the challenges of maintaining butterfly populations, including habitat loss, the impact of parasitic wasps introduced to control cabbage white butterflies and the use of pesticides. She emphasised the importance of planting flowering plants and native species in our gardens to support the butterflies and moths as many rely on particular plant species for survival.

The Monarch butterfly was first recorded in New Zealand in 1873. It is considered a native species as it is believed to have arrived naturally, carried on wind currents across the Pacific. In contrast, the cabbage white butterfly is an introduced species.

Common Copper, Rob Herd



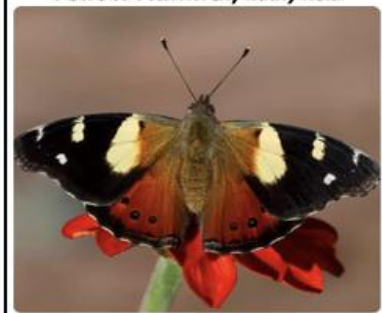
Wing span 25-35 mm

Red Admiral, Zac Warren



Wing span 50-60 mm

Yellow Admiral, Kathy Reid



Wing span 48-55 mm

Jacqui illustrated her talk with images of several of our endemic species of butterfly. Endemic means their range is restricted to New Zealand. All three of the butterflies above can be found throughout New Zealand. The Common Copper is a small butterfly found in open country. It lays its eggs on Muehlenbeckia.

The Red Admiral and Yellow Admiral lay their eggs on nettles. New Zealand has several species of nettles. They all have stinging hairs but the hairs of the New Zealand Tree Nettle (*Urtica ferox*) are modified into spines which can inflict a very painful sting. This plant can grow to a height of 3m and is thought to have been responsible for the death of a lightly clad hunter who died five hours after walking through a dense patch.

Kate's Take continued ...

The Red Admiral was once common locally but is now rarely seen in Auckland, Tāmaki Makaurau. Its decline coincided with the aerial spraying campaign (1996-2004) to eradicate the painted apple moth. Jacqui outlined various ways we could help support our Lepidopterans. Packets of seeds can be purchased from the Trust website. She suggested that we:-

- Plant nectar flowers to provide food for adult butterflies.
- Grow plants that are the preferred food source of particular species of caterpillars.
- Control predators such as the introduced wasps, the German wasp, Common Wasp and the three species of paper wasps



The difference in the lifecycle of butterflies and moths

Butterflies and Moths go through a four-stage life cycle. Eggs are laid on a food plant. When the egg hatches the caterpillar (larva) feeds on the host plant and rapidly grows. During this phase the larva will shed its skin several times. Finally, it will reach the stage when it is ready to transform from a caterpillar to an adult. In butterflies the caterpillar undergoes metamorphosis within a protective case, a chrysalis (pupa). After a period of time the pupal skin will burst and the butterfly will emerge. Moths have a similar four stage life cycle but rather than transitioning directly from larva to pupa directly the moth caterpillar spins a silky cocoon around itself before forming the hard pupal case inside the cocoon.

How far do New Zealand's Monarch Butterflies travel?

At the start of the talk Jacqui talked about the amazing navigational skills and overwintering habits of the Monarch Butterfly in North America. To investigate the behaviour of the Monarch Butterfly here in New Zealand the Trust has started tag and release program. At our meeting Jacqui brought some Monarchs that she had reared. Prior to the meeting, tags had been attached to the underside of their wings. Because butterflies are cold blooded, keeping them in a cool place makes them lethargic. In this condition it is easy to attach the tags. Jacqui was able to show us the tag that she had attached. (See images below). After a few minutes in the warmth of the sun the butterflies flew away, unimpeded by the tags.



The Trust keeps a record of the release points and then relies on the general public to spot these tagged specimens as they fly to new locations. If you see one of these butterflies, enter the tag code, location and site description into www.mb.org.nz, website along with any other relevant details. This information is added to a database that is shared with the tagger and the reporter before being made available to schools, scientists and other interested parties.



The Trust website www.nzbutterflies.org.nz, is packed with information, activities and resources. You can sign up to receive a free weekly e-news that will keep you up to date with special offers and events or you can become a financial member and receive a quarterly magazine.

Many thanks to Jacqui for a wonderful talk and to the Trust for the use of their photos.

K Senner Mar25

COMMITTEE

Chairman Brian Erikson
brian@senpak.nz

Treasurer Mervyn Coward
mervyn@senpak.nz

Secretary Dawn Howarth
dawn@senpak.nz

Membership Secretary Robyn Carter
robyn@senpak.nz

Systems Manager Graeme FitzGerald
graeme@senpak.nz

Publicity Warren Taylor
warren@senpak.nz

Course Co-ordinator Mike Empson
mike@senpak.nz

Website Assistant Keith Erikson
keith@senpak.nz

Guest Speaker Co-Ordinator Maggie Burrill
maggie@senpak.nz

Asst Guest Speaker Co-Ordinator Fay Mullins
fay@senpak.nz

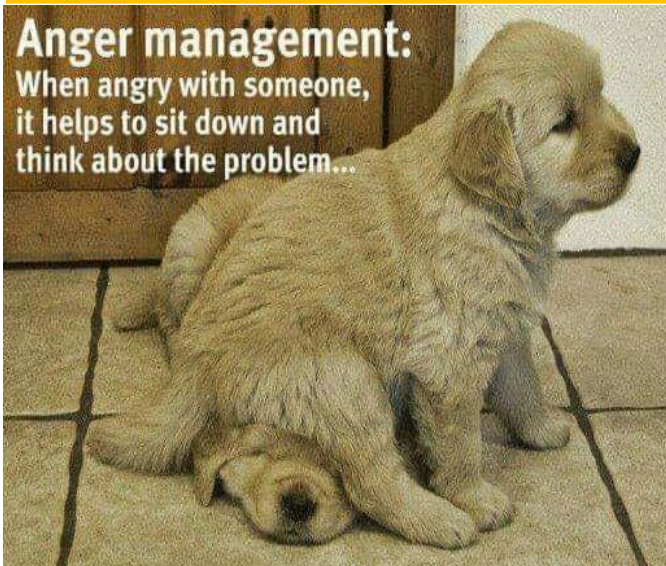
Newsletter Editor Dawn Howarth
dawn@senpak.nz



**MEN SAY WOMEN SHOULD
COME WITH
INSTRUCTIONS...WHAT'S
THE POINT OF THAT? HAVE
YOU EVER SEEN A MAN
ACTUALLY READ THE
INSTRUCTIONS?**

Anger management:

When angry with someone,
it helps to sit down and
think about the problem...



**I watched a documentary
on marijuana last night.
That's probably how I'll
watch all documentaries
from now on.**

COURSE TIMETABLES, HELP DAYS AND COURSE BOOKING INFORMATION

To view all SeniorNet courses and timetable, click here

<http://www.senpak.nz/courses/>

APRIL HELP DAYS

| | |
|------|-------------|
| TUES | 01 APR 10AM |
| MON | 07 APR 1 PM |
| WED | 16APR 10AM |
| THUR | 24APR 10AM |
| TUE | 29APR 10AM |

NO APPOINTMENT NECESSARY

**MAY YOUR DAYS
BE FULL OF
INAPPROPRIATE
BEHAVIOUR
AND FUN.**

Course Booking Information

- * You need to be a member of SeniorNet to take part in our classes.
- * If you need assistance in deciding on a course, please contact the Tutor who will answer any questions and also take your booking.
- * We require you to pay a course fee to cover the cost of notes and other expenses. Please bring the correct cash to the first session.
- * Our Courses are all held at our Learning Centre at

12 Ben Lomond Crescent, Pakuranga.

